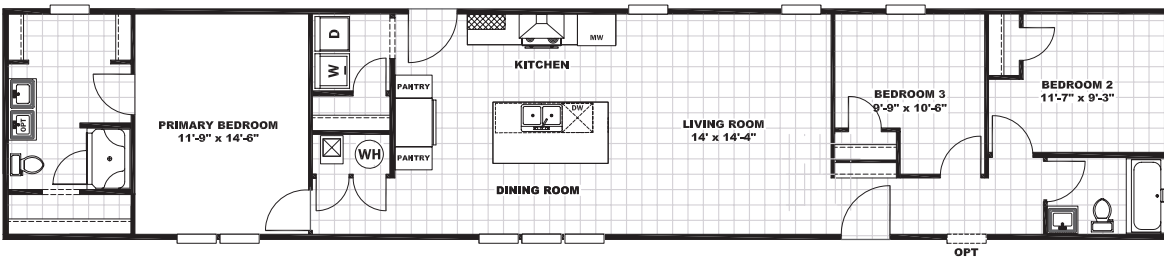




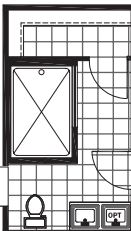
REVOLUTION 76A

3 beds | 2 baths | 1,140 sq. ft. | 16x76

VENETIAN BATH TUB



72" TILE



Standard Features

EXTERIOR / CONSTRUCTION

- Vinyl Siding
- Thermoply Underlayment
- 2x4 Exterior Walls - 16" On-Center
- 8ft Ceilings (Stipple Finish)
- No Dormer
- Cement Board Fascia w. Vented Vinyl Soffit
- Low-E Windows (White)
- 2 Panel Vinyl Shutters Front Door Side
- 36x80" 6-Panel Front Door (No Storm)
- 36x80" 9-Lite Rear Door (In-Swing)
- Vinyl Corner Posts (White)

FLOORS

- 2x6 Transverse Floor Joists - 16" On-Center
- "Pier-Saver" Construction all Exterior Doors
- 19/32" Tongue & Groove OSB Floor Decking
- One-Piece Aluminum Floor Ducts
- 25oz Carpet - Primary Bedroom Only
- Vinyl Flooring - All Other Areas

MISCELLANEOUS

- 1 Piece Fiberglass Shower
- No Backsplash
- 2-Panel Square Interior Doors
- Shelving in all Closets & Utility Room
- eBuilt® Construction
- Single Square Ceramic Sink
- ecobee Smart Thermostat®
- SmartComfort® by Carrier®

KITCHEN

- DuraCraft® Cabinetry (42" Overhead - Finished)
- European Hidden Hinges
- Knobs on all Doors (Black)
- Pulls on all Drawers (Black)
- 1 Bank of Drawers
- No Pot & Pan Drawers
- Samsung® Stainless Steel Appliances
 - 18 Cu. Ft. Top-Mount Refrigerator with Icemaker
 - Smooth-Top Electric Range
 - Stainless Steel Range Hood
- Pfister® Faucets

PLUMBING & ELECTRICAL

- Whole House Water Cut-Off
- Water Cut-Offs at All Fixtures
- 40 Gallon Hybrid Heat Pump Water Heater
- LED Can Lighting Thru-Out
- 200 AMP Electrical Service
- Exterior Outlet on Rear
- Frost Free Faucet on Rear

Popular Options

- OSB Wrap
- Dormer
- Columns @ Dormer
- Vertical Board & Batten between Columns
- Shake between Columns
- Craftsman Front Door (White or Black)
- Full View Storm (Front and/or Rear) - Shipped loose
- Bronze Windows
- 2x6 Exterior Walls 16" On-Center (w. R-21 Insulation)

- Stainless Side-by-Side Refrigerator
- Dishwasher
- 4" Backsplash (Kitchen & Vanities)
- 2 Pot & Pan Drawers in Kitchen
- Glamour Bath
- Hand-laid Tile Showers (48", 60", 72" where available)
- Dark Mode Exterior Package
- Midnight Hardware Package
- Midnight Plumbing Package
- Built-In Microwave w. 2 Pot & Pan Drawers

- Cage Light @ Kitchen Island
- Farm House Kitchen Sink (Stainless or White)
- EZ Close Up
- Library Accent Wall
- 2" Mini-Blinds Through-Out Home
- Wire & Brace for Ceiling Fan
- Hinged Barn Door (Pantry or Utility)
- 50 Gallon Hybrid Heat Pump Water Heater
- Carpet in Bedrooms
- Double Sinks @ Vanity (where available)

Customer Name: _____

Customer Signature: _____

Phone Number: _____

County: _____

CSM: _____

****All Options Subject to Change Without Notice****

The home series, floor plans, photos, renderings, specifications, features, pricing, materials and availability shown will vary by retailer and state, and are subject to change without notice.



claytongiles.com
405 S. Broad St, New Tazewell, TN 37825

